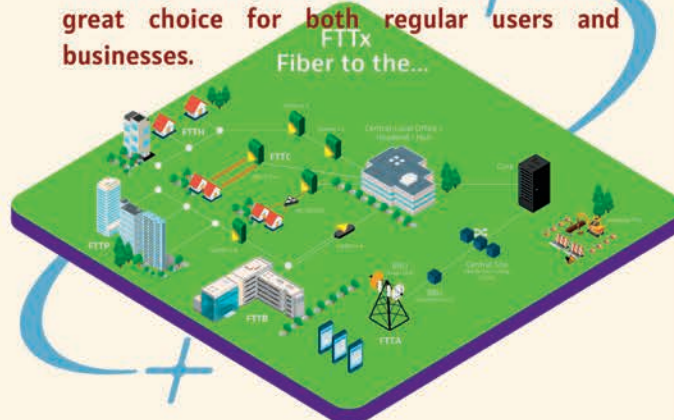


FTTX

FTTX (Fiber To The X) is a term that describes different ways of using fiber optic networks to provide high-speed broadband to homes, businesses, and other places. In FTTX, the "X" can stand for different locations like homes (FTTH), businesses (FTTB), or a point nearby (FTTC).

With FTTX, fiber optic cables are installed in a specific area, like a neighborhood or building. Then, the signal is sent out using methods like Ethernet or Wi-Fi. These solutions offer faster speeds and more dependable connections compared to older copper networks, making them perfect for fast broadband.

In general, FTTX solutions are gaining popularity due to the increasing demand for fast broadband. They bring several advantages over traditional copper networks, including speed, low delay, and reliability. This makes them a great choice for both regular users and businesses.



Explore a World of FIBER OPTIC & CONNECTIVITY



Contact Information



+6017 6630 223



Ms Candy



www.teakway.com.my



candy@teakway.com.my



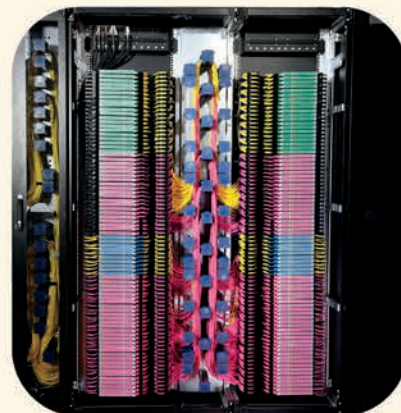
Fiber Optic Cable Management— Overhead Trunking

The overhead trunking system typically consists of a series of poles or supports that are erected along the data center aisles or rows. These supports are connected by a series of overhead cable trays or channels, which serve to hold and protect the fiber optic cables. The trays or channels may be made of various materials, such as aluminium or steel, and are designed to provide a secure and protected pathway for the cables



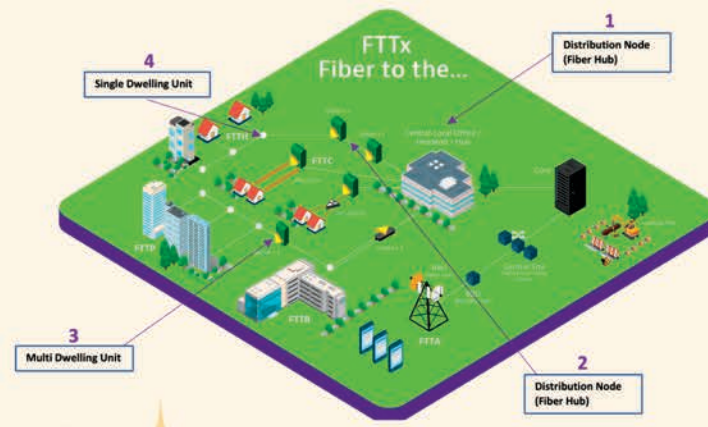
High Density Optical Distribution

Central Optical distribution frames are an essential part of any Data centre/ Headend. Landing Outside Plant cables and patching to other cabinets and active equipment needs to be simple, fast and above all easy to re-configure.



Highlight

FTTX PASIVE PRODUCT

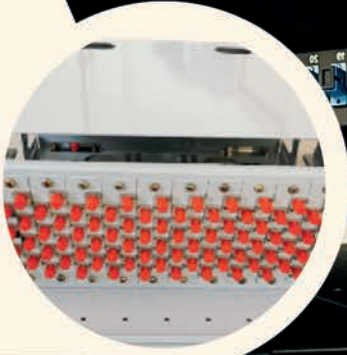
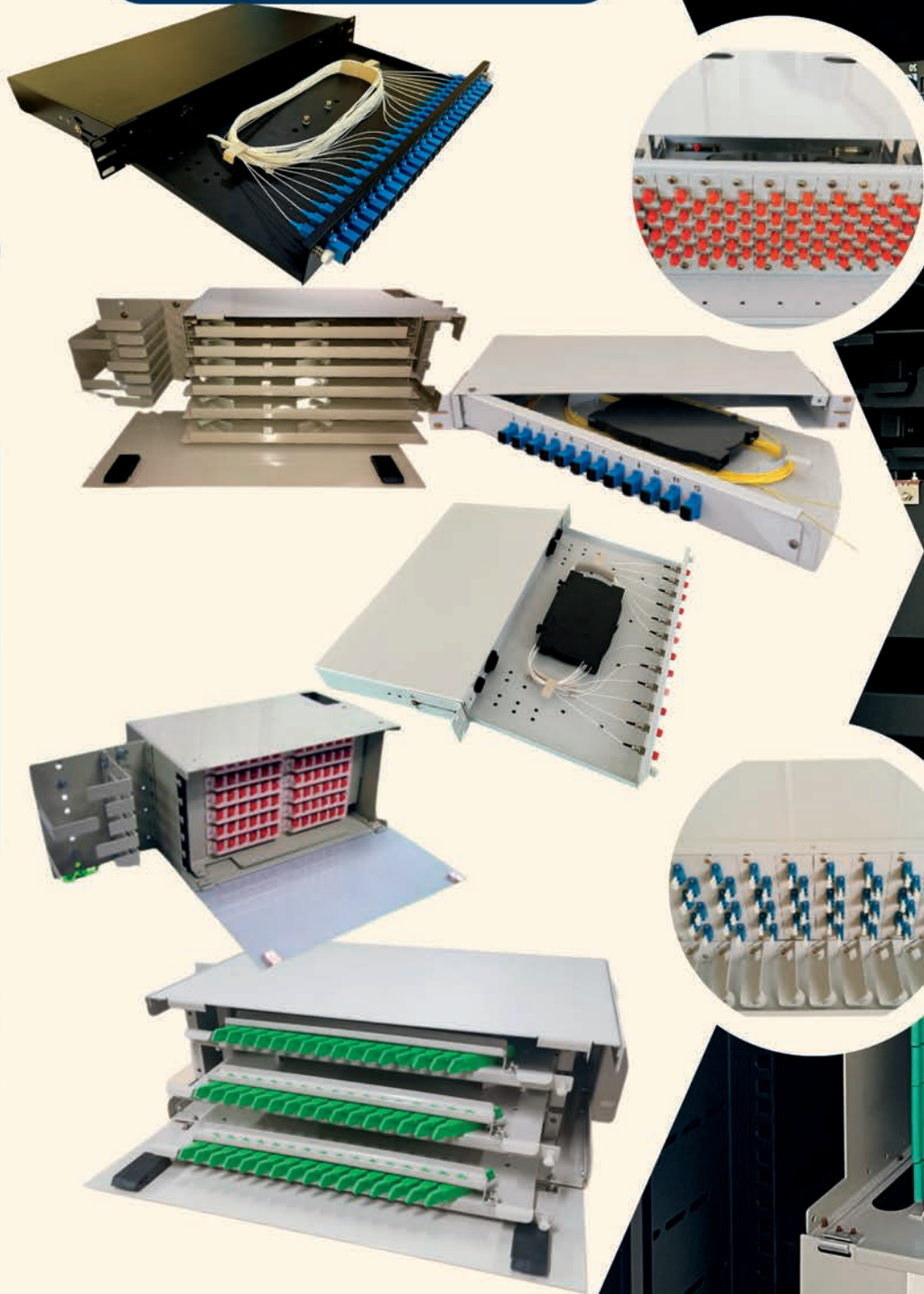


FTTX passive products refer to the various components and equipment in a fiber optic network that do not require power or active electronic components for their operation. These passive products play a crucial role in facilitating the transmission of light signals over fiber optic cables and ensuring efficient connectivity within the network. They are integral to the overall performance and reliability of FTTX (Fiber To The X) solutions, which deliver high-speed broadband services to homes, businesses, and other locations.

Optical PATCH PANELS



Fiber Patch Panel FC LC SC E200



Optical distribution panels designed for data cabinet deployment come in high-density configurations, accommodating as many as 144 fibers per Rack Unit. These panels offer a range of connector options, including SC, FC, LC, E200, and more. They are available in either splice and patch configurations or with built-in connectors for seamless plug-and-play installation.



Outdoor Distribution Node



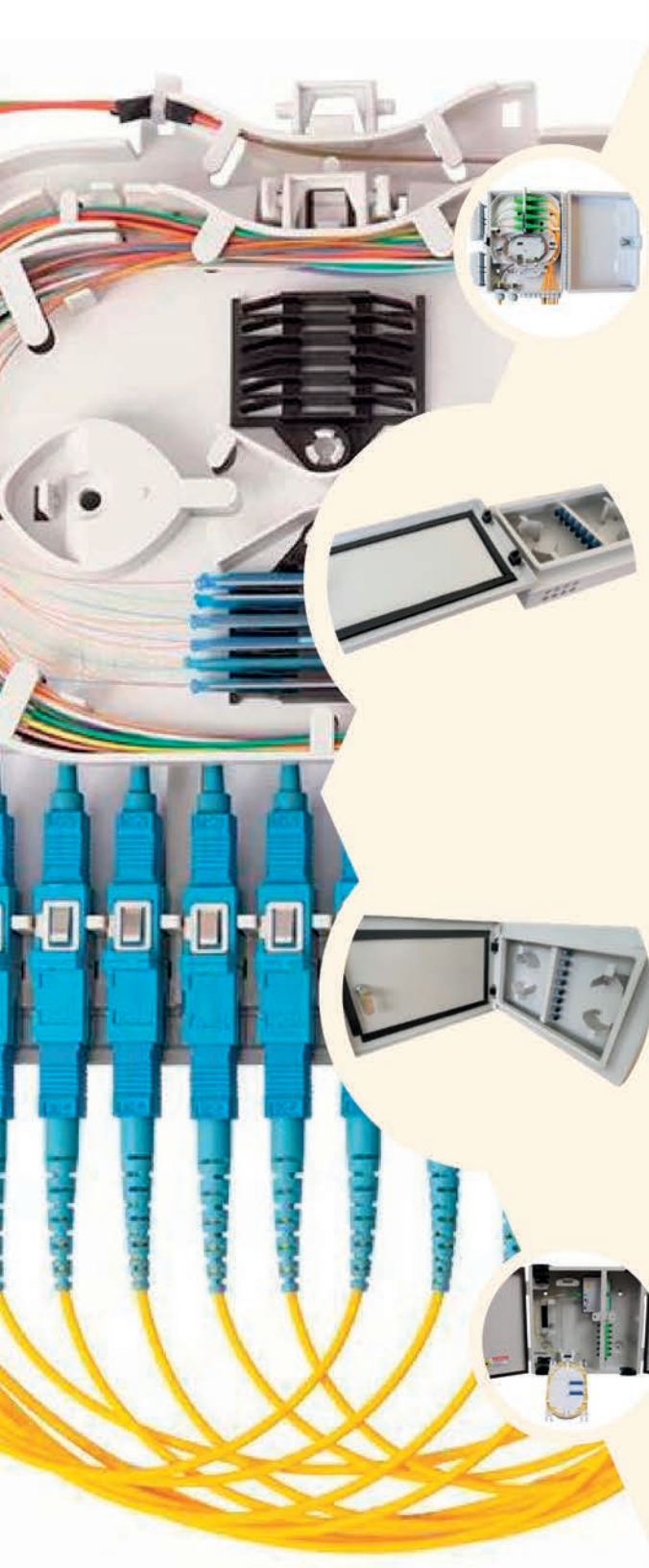
Indoor Distribution Node



DISTRIBUTION NODE



FTTX passive products refer to the various components and equipment in a fiber optic network that do not require power or active electronic components for their operation. These passive products play a crucial role in facilitating the transmission of light signals over fiber optic cables and ensuring efficient connectivity within the network. They are integral to the overall performance and reliability of FTTX (Fiber To The X) solutions, which deliver high-speed broadband services to homes, businesses, and other locations.



Wall Mount MDU



MULTI DWELLING UNIT



Various configurations of Distribution Hubs are provided for Multi-Dwelling Units (MDUs), offering a spectrum of options. These range from compact enclosures with cost-effective Splice-only hubs to expandable plug-and-play setups with connectors. The choice of product typically hinges on the technical expertise and preferences of the building or network owner. Connectorized customer demarcation points are often advantageous in MDUs, facilitating easy fault detection and correction.